

**For further information:**

Jonathan Liu: [jonathan.liu@conference-board.org](mailto:jonathan.liu@conference-board.org)

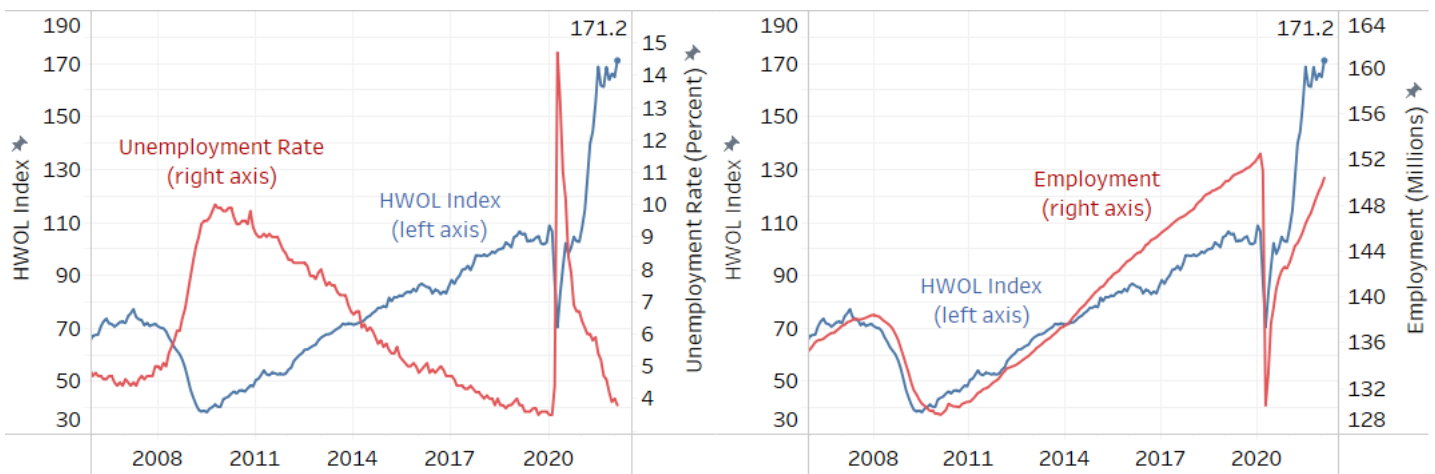
## Online Labor Demand Rises in February

**NEW YORK, March 9, 2022...** *The Conference Board®-Burning Glass® Help Wanted OnLine® (HWOL) Index* increased in February and now stands at 171.2 (July 2018=100), up from 164.9 in January. The 3.8 percent increase between January and February follows a 0.7 percent decrease between December and January. Overall, the Index is up 49.5 percent from a year ago.

The Conference Board®-Burning Glass® Help Wanted OnLine® (HWOL) Index measures the change in advertised online job vacancies over time, reflecting monthly trends in employment opportunities across the US. The Help Wanted OnLine® Index is produced in collaboration with Emsi Burning Glass, the global pioneer in real-time labor market data and analysis. This recent collaboration enhances the Help Wanted OnLine® program by providing additional insights into important labor market trends.

### **Help Wanted OnLine® (HWOL) Index: United States, seasonally adjusted, February 2022**

[July 2018=100]



Sources: The Conference Board, Emsi Burning Glass, Bureau of Labor Statistics

© 2022 The Conference Board. All rights reserved.

The release schedule, national historic table and technical note are available on The Conference Board website, <http://www.conference-board.org/data/helpwantedonline.cfm>. The underlying data for The Conference Board HWOL is collected by Emsi Burning Glass.

**Table 1. HWOL Data Series: Total ads by Census Division, seasonally adjusted, February 2022**

Area <sup>1</sup>	Total Ads <sup>2</sup> (Thousands)	Area <sup>1</sup>	Total Ads <sup>2</sup> (Thousands)
<b>United States</b>	7,189.4	South Atlantic	1,402.0
New England	410.2	East South Central	374.3
Middle Atlantic	704.5	West South Central	851.6
East North Central	1,054.7	Mountain	666.9
West North Central	523.5	Pacific	1,194.0

**Source: The Conference Board, Emsi Burning Glass**

1. Census Divisions defined by the U.S. Census Bureau
2. Ad levels are seasonally adjusted and may not add up to the total US count

© 2022 The Conference Board. All rights reserved.

**Table 2. HWOL Data Series: Total ads by State, seasonally adjusted, February 2022**

State	Total Ads <sup>1</sup> (Thousands)	State	Total Ads <sup>1</sup> (Thousands)
Alabama	96.5	Montana	21.0
Alaska	16.4	Nebraska	52.2
Arizona	176.0	Nevada	80.2
Arkansas	43.6	New Hampshire	37.4
California	845.8	New Jersey	179.1
Colorado	207.9	New Mexico	38.1
Connecticut	99.4	New York	309.8
Delaware	14.7	North Carolina	243.9
Florida	451.9	North Dakota	15.8
Georgia	237.6	Ohio	257.2
Hawaii	24.8	Oklahoma	78.3
Idaho	55.8	Oregon	112.6
Illinois	263.9	Pennsylvania	217.8
Indiana	148.5	Rhode Island	28.0
Iowa	85.2	South Carolina	96.5
Kansas	74.8	South Dakota	17.0
Kentucky	81.5	Tennessee	155.6
Louisiana	85.0	Texas	645.3
Maine	13.6	Utah	84.5
Maryland	105.2	Vermont	9.7
Massachusetts	221.0	Virginia	190.1
Michigan	247.9	Washington	193.7
Minnesota	143.3	West Virginia	11.8
Mississippi	41.3	Wisconsin	138.1
Missouri	136.1	Wyoming	7.0

**Source: The Conference Board, Emsi Burning Glass**

1. Ad levels are seasonally adjusted and may not add up to the total US count

© 2022 The Conference Board. All rights reserved.

**Table 3. HWOL Data Series: Total ads by selected MSAs, seasonally adjusted, February 2022**

MSA <sup>1</sup>	Total Ads <sup>2</sup> (Thousands)	MSA <sup>1</sup>	Total Ads <sup>2</sup> (Thousands)
Birmingham, AL	30.4	Kansas City, MO	76.5
Phoenix, AZ	125.0	St. Louis, MO	59.3
Tucson, AZ	24.3	Las Vegas, NV	54.2
Los Angeles, CA	262.8	Buffalo, NY	28.5
Riverside, CA	68.7	New York, NY	336.9
Sacramento, CA	48.5	Rochester, NY	26.4
San Diego, CA	88.5	Charlotte, NC	72.7
San Francisco, CA	150.4	Cincinnati, OH	59.4
San Jose, CA	69.6	Cleveland, OH	49.8
Denver, CO	116.4	Columbus, OH	50.9
Hartford, CT	33.7	Oklahoma City, OK	30.9
Washington, DC	155.5	Portland, OR	79.7
Jacksonville, FL	42.2	Philadelphia, PA	125.7
Miami, FL	132.4	Pittsburgh, PA	55.8
Orlando, FL	62.8	Providence, RI	27.3
Tampa, FL	81.7	Memphis, TN	33.0
Atlanta, GA	128.5	Nashville, TN	60.6
Honolulu, HI	16.2	Austin, TX	75.4
Chicago, IL	205.6	Dallas, TX	224.1
Indianapolis, IN	50.5	Houston, TX	116.3
Louisville, KY	34.3	San Antonio, TX	56.0
New Orleans, LA	30.4	Salt Lake City, UT	41.5
Baltimore, MD	56.2	Richmond, VA	36.4
Boston, MA	173.1	Virginia Beach, VA	50.8
Detroit, MI	114.6	Seattle-Tacoma, WA	135.7
Minneapolis, MN	96.4	Milwaukee, WI	43.2

**Source: The Conference Board, Emsi Burning Glass**

1. Metropolitan areas are based on 2013 OMB county-based Metropolitan Statistical Area (MSA) definitions

2. Ad levels are seasonally adjusted and may not add up to the total US count

© 2022 The Conference Board. All rights reserved.

## PROGRAM NOTES

Prior to 2020, The Conference Board constructed the HWOL Index based solely on online job ads over time. Using a methodology designed to reduce non-economic volatility contributed by online job sources, the HWOL Index served an effective measure of changes in labor demand over time.

Beginning January 2020, the HWOL Index was refined as an estimate of change in job openings (based on BLS JOLTS), using a series of econometric models which incorporate job ads with other macroeconomic indicators such as employment and aggregate hours worked. By adopting a modeled approach which combines other data sources with data on online job ads, the HWOL Index more accurately tracks important movements in the labor market.

---

**The Conference Board®-Burning Glass® Help Wanted OnLine® (HWOL)** Index measures changes over time in advertised online job vacancies, reflecting monthly trends in employment opportunities across the US. The HWOL Data Series aggregates the total number of ads available by month from the HWOL universe of online job ads. Ads in the HWOL universe are collected in real-time from over 50,000 online job domains including traditional job boards, corporate boards, social media sites, and smaller job sites that serve niche markets and smaller geographic areas.

Like The Conference Board's long-running Help Wanted Advertising Index of print ads (which was published for over 55 years and discontinued in July 2008), **Help Wanted OnLine®** measures help wanted advertising, i.e. labor demand. The HWOL Data Series began in May 2005 and was revised in December 2018. With the December 2018 revision, The Conference Board released the HWOL Index, improving upon the HWOL Data Series' ability to assess local labor market trends by reducing volatility and non-economic noise and improving correlation with local labor market conditions.

In 2019, the **Help Wanted OnLine®** program partnered with Emsi Burning Glass, the new sole provider of online job ad data for HWOL. With the partnership, the HWOL Data Series has been revised historically to reflect a new universe and methodology of online job advertisements and therefore cannot be used in conjunction with the pre-revised HWOL Data Series. The HWOL Data Series begins in January 2015 and the HWOL Index begins in December 2005. HWOL Index values prior to 2020 are based on job ads collected by CEB, Inc.

Those using this data are urged to review the information on the database and methodology available on The Conference Board website and contact us with questions and comments. Background information and technical note and discussion of revisions to the series are available at: <http://www.conference-board.org/data/helpwantedonline.cfm>.

### About The Conference Board

The Conference Board is the member-driven think tank that delivers trusted insights for what's ahead. Founded in 1916, we are a non-partisan, not-for-profit entity holding 501 (c) (3) tax-exempt status in the United States. [www.conference-board.org](http://www.conference-board.org).

### About Emsi Burning Glass

Emsi Burning Glass is the world's leading authority on job skills, workforce talent, and labor market dynamics, providing expertise that empowers businesses, education providers, and governments to find the skills and talent they need and enables workers to unlock new career opportunities. Headquartered in Boston, Massachusetts, and Moscow, Idaho, Emsi Burning Glass is active in more than 30 countries and has offices in the United Kingdom, Italy, New Zealand, and India. The company is backed by global private equity leader KKR. [www.burning-glass.com](http://www.burning-glass.com)

### **Help Wanted OnLine® Publication Schedule**

<b><u>Data for the Month</u></b>	<b><u>Release Date</u></b>
March 2022	April 6, 2022
April 2022	May 11, 2022
May 2022	June 8, 2022
June 2022	July 13, 2022
July 2022	August 10, 2022
August 2022	September 9, 2022
September 2022	October 12, 2022
October 2022	November 9, 2022
November 2022	December 7, 2022

© The Conference Board 2021. All data contained in this press release are protected by United States and international copyright laws. The data displayed are provided for informational purposes only and may only be accessed, reviewed, and/or used in accordance with, and the permission of, The Conference Board consistent with a subscriber or license agreement and the Terms of Use displayed on our website at [www.conference-board.org](http://www.conference-board.org). The data and analysis contained herein may not be used, redistributed, published, or posted by any means without express written permission from The Conference Board.

**COPYRIGHT TERMS OF USE.** All material in this press release and on Our Sites is protected by United States and international copyright laws. You must abide by all copyright notices and restrictions contained in Our Sites. You may not reproduce, distribute (in any form including over any local area or other network or service), display, perform, create derivative works of, sell, license, extract for use in a database, or otherwise use any materials (including computer programs and other code) in this press release or on Our Sites (collectively, "Site Material"), except that you may download Site Material in the form of one machine-readable copy that you will use only for personal, noncommercial purposes, and only if you do not alter Site Material or remove any trademark, copyright or other notice displayed on the Site Material. If you are a subscriber to any of the services offered on Our Sites, you may be permitted to use Site Material, according to the terms of your subscription agreement.

**TRADEMARKS.** "THE CONFERENCE BOARD", the TORCH LOGO, "THE CONFERENCE BOARD HELP WANTED ONLINE", and any other logos, indicia and trademarks featured in this press release or on Our Sites are trademarks owned by The Conference Board, Inc. in the United States and other countries ("Our Trademarks"). You may not use Our Trademarks in connection with any product or service that does not belong to us nor in any manner that is likely to cause confusion among users about whether The Conference Board is the source, sponsor, or endorser of the product or service, nor in any manner that disparages or discredits us.

Violators of these rights will be prosecuted to the full extent of the law. Nothing herein shall restrict the use of the information by news journalists using